



INDOFINE Chemical Company, Inc.

121 Stryker Lane, Bldg. 30, Suite 1 • Hillsborough, NJ 08844 • U.S.A.

Phone: (908) 359-6778 • FAX: (908) 359-1179

website: www.indofinechemical.com

e-mail: chemical@indofinechemical.com

CERTIFICATE OF ANALYSIS

Cat No.: 22-330

Product: 7,2',4'-TRIMETHOXYFLAVONE

Lot Number: 1212288

Chemical Formula: C₁₈H₁₆O₅

Molecular Weight: 312.33

Melting Point: 138-139°C

Appearance: Light greenish yellow powder

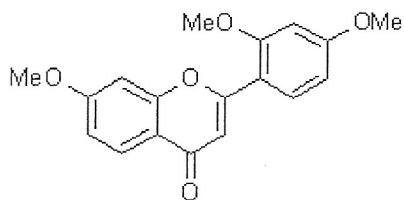
Solubility: Soluble in chloroform

TLC: Chloroform:Methanol (9:1)

NMR Spectrum: Enclosed

Storage: Cool, dry place

Purity(HPLC): 99.75%





INDOFINE Chemical Company, Inc.

121 Stryker Lane, Bldg. 30, Suite 1 • Hillsborough, NJ 08844 • U.S.A.

Phone: (908) 359-6778 • FAX: (908) 359-1179

website: www.indofinechemical.com

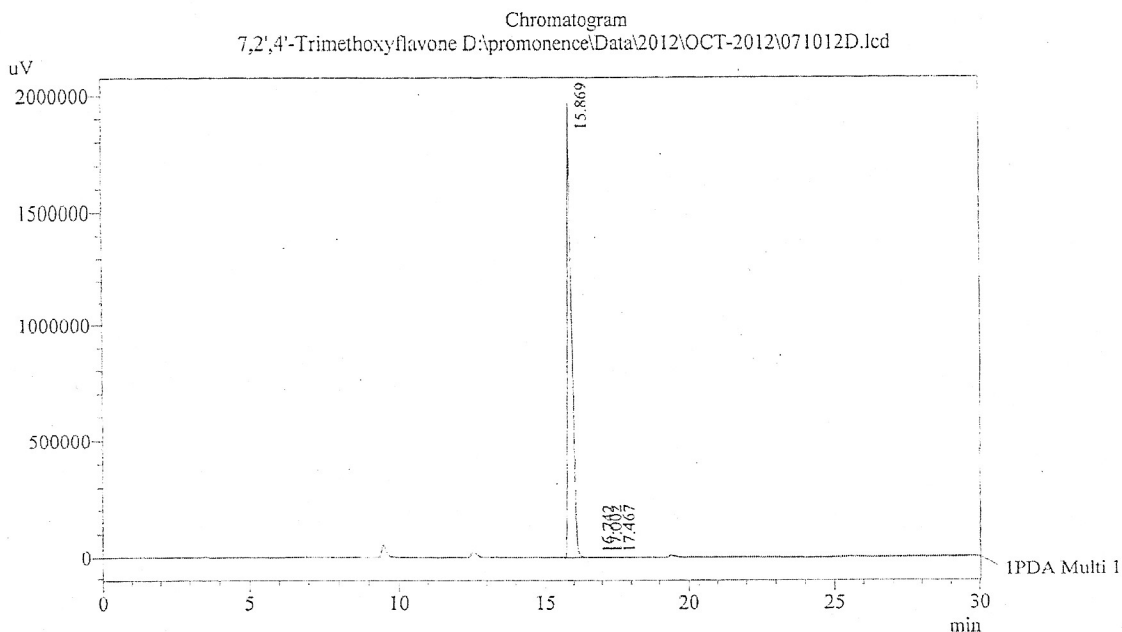
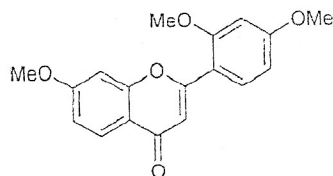
e-mail: chemical@indofinechemical.com

HPLC ANALYSIS

Acquired by : Sanjeev
Sample Name : 7,2',4'-Trimethoxyflavone
Sample ID : 25gm Lot (Herborganics)
Injection Volume : 20 uL
Data Filename : 071012D.lcd
Method Filename : Linear Gradient.M.lcm

Catalog no.: 22-330
Product name: 7,2',4'-Trimethoxyflavone
Lot No.: 1212288

Column : LUNA C-18(2), (250mm x4.6mm 5.0µ)
Flow : 1.000 mL/min.
Mobile Phase : A(0.05% TFA in water) B(Acetonitrile)
0.01 90 10
12.0 10 90
20.0 10 90
25.0 90 10
30.0 90 10



1 IPDA Multi 1 / 240nm 4nm

PeakTable

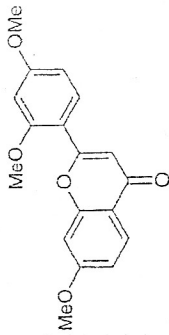
PDA Ch1 240nm 4nm

Peak#	Name	Ret. Time	Area	Area %	Relative Retention Time
1	7,2',4'-Trimethoxyflavone	15.869	19556022	99.75	1.00
2	RT:16.742	16.742	7543	0.04	1.05
3	RT:17.002	17.002	11079	0.06	1.07
4	RT:17.467	17.467	30796	0.16	1.10
Total			19605441	100.00	



INDOFINE Chemical Company, Inc.
 121 STRYKER LANE
 BLDG. 30, SUITE 1
 HILLSBOROUGH, NJ 08844

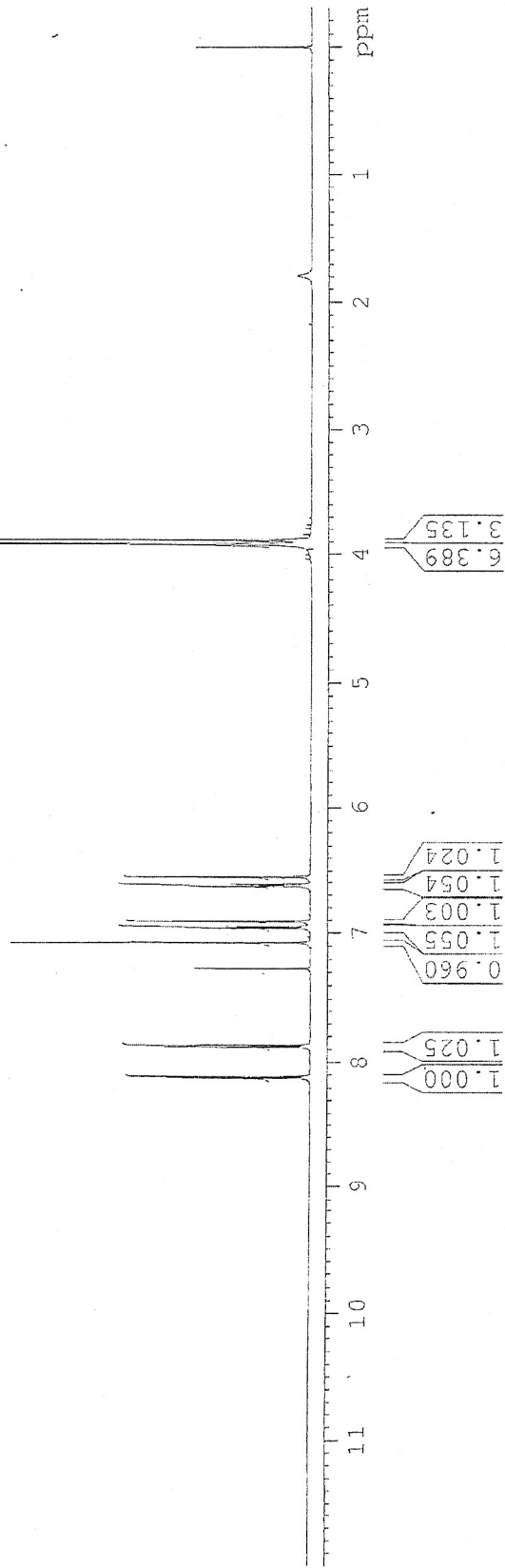
Catalog no.: 22-330
 Product name: 7,2',4'-Trimethoxyflavone
 Lot No.: 1212288



SOLVENT CDCL3
 NS 9
 DS 0
 SWH 13020.833 Hz
 FIDRES 0.434957 Hz
 AQ 1.151932 sec
 RG 20.2
 DR 38.400 usec
 DE 6.00 usec
 TE 298.2 K
 DI 1.50000000 sec
 TDO 1

KM-07
 1H IN CDCL3
 AVANCE-600

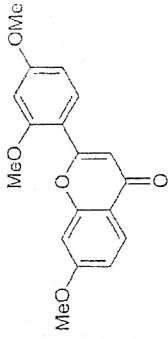
***** CHANNEL F1 *****
 NUC1 1H
 P1 7.50 usec
 PL1 2.60 dB
 PL1W 6.62584418 W
 SFO1 600.3334650 MHz
 ST 32768
 SF 600.3300192 MHz
 WDW EM
 SSB 0
 LE 0.30 Hz
 GB 0
 LC 1.00





INDOFINE Chemical Company, Inc.
 121 STRYKER LANE
 BLDG. 30, SUITE 1
 HILLSBOROUGH, NJ 08844

Catalog no.: 22-330
 Product name: 7,2',4'-Trimethoxyflavone
 Lot No.: 1212288



SOLVENT CDCL3
 NS 9
 DS 0
 SMH 13020.833 Hz
 FIDRES 0.424057 Hz
 AQ 1.1519732 sec
 RG 20.2
 DS 38.400 usec
 DE 6.00 usec
 TE 298.2 K
 DI 1.50000000 sec
 TD0 1

***** CHANNEL f1 *****
 NUC1 1H
 P1 7.50 usec
 PL1 2.50 dB
 PL1W 6.62589443 W
 SFO1 600.3334650 MHz
 SI 32.788
 SF 600.3330102 MHz
 NEW EM
 SSS 0
 LE 0.30 Hz
 GE 0
 PC 1.00

